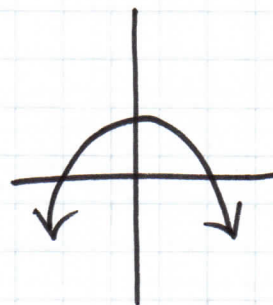
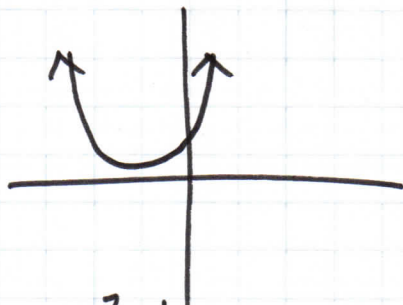


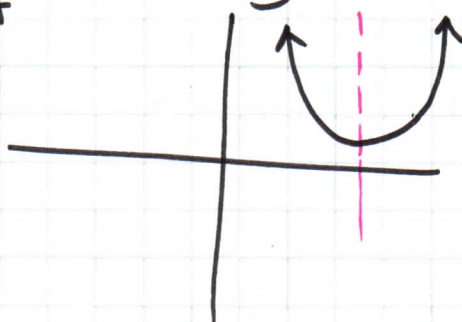
Section 9.1 and 9.2

Parabola



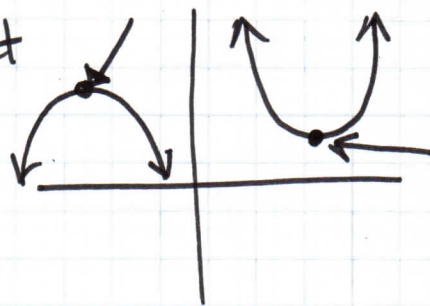
Quadratic $ax^2 + bx + c = 0$

1. axis of symmetry - line cutting the graph in half



$$x = \frac{-b}{2a}$$

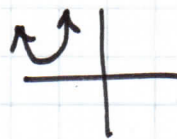
2. Vertex - starting point



3. Opens up/Down

$$ax^2 + bx + c = 0$$

If a is positive opens up



If a is Negative open down

