

Real-World Algebra Assignment

1. Sierra Custom Plumbing charges \$45 for a service call, plus an hourly rate of \$40.

a. What would Sierra Custom Plumbing charge for a job that takes three hours?

$$45 + 3(40) = 45 + 120 = \boxed{\$165}$$

b. What would Sierra Custom Plumbing charge for a job that takes two-and-a-half hours?

$$45 + 2.5(40) \\ 45 + 100 = \boxed{\$145}$$

c. What would be the cost if you called the plumber to your house and you were not home?

(Hint: Nothing in life is free.)

$$45 + 0(40) = \boxed{\$45}$$

d. Write an algebraic expression for the cost of a plumbing service that takes h hours?

$$\boxed{45 + 40h}$$

2. To send a package to Arcata, CA via Joe's Delivery Service it would cost you \$2.50 plus \$0.75 for each pound.

a. How much would it cost to send a two pound package?

$$2.50 + 0.75(2) \\ 2.50 + 1.50 = \boxed{\$4.00}$$

b. How much would it cost to send a six pound package?

$$2.50 + 0.75(6) \\ 2.50 + 4.50 = \boxed{\$7.00}$$

c. What would it cost to send a large 5-topping pizza?

I have no idea 😊

How much does a large 5-topping pizza weigh?

d. Write an algebraic expression for the cost of sending a p pound package?

$$\boxed{2.5 + .75p}$$

3. High Mountain Taxi in Aspen, CO charges \$3.50 at the flag drop (this is the base charge) plus \$1 per mile.

a. What would be the fare for a 15 mile cab ride?

$$3.50 + 1(15) \\ 3.50 + 15 = \boxed{\$18.50}$$

b. What would be the fare from the airport into town? (the distance from the airport to town is seven miles)

$$3.50 + 1(7) \\ 3.50 + 7 = \boxed{\$10.50}$$

c. What would be the round trip fare to the airport? (14 miles)

$$3.50 + 1(14) \\ 3.50 + 14 = \boxed{17.50}$$

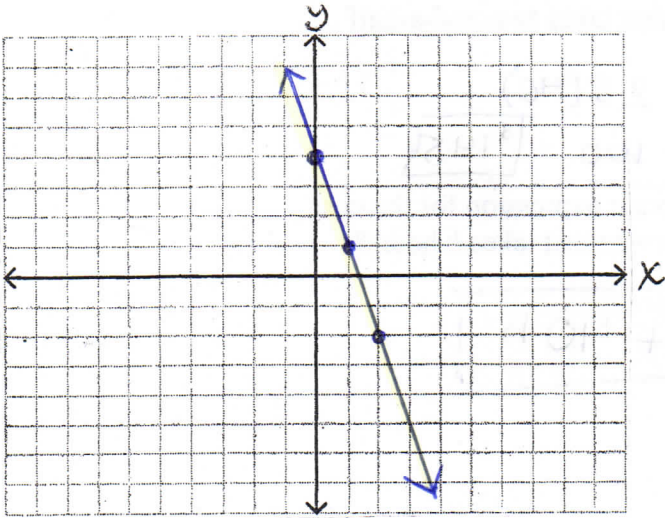
d. Write an algebraic expression for the fare of an m mile cab ride?

$$\boxed{3.50 + m}$$

Graphing Functions using a T-chart

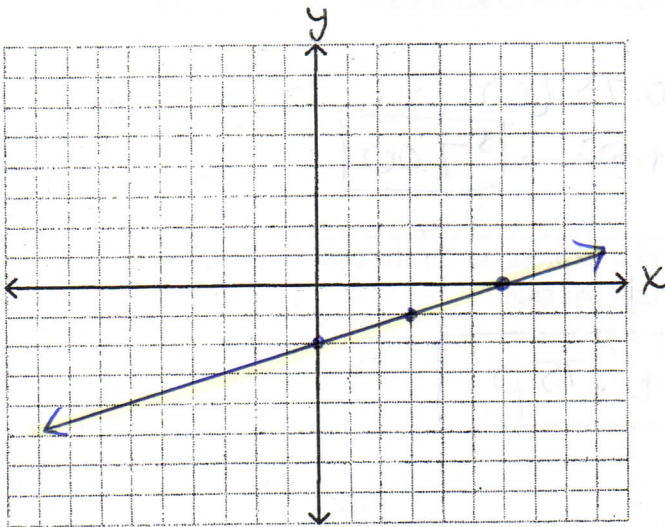
Graph the *functions* using a t-chart (you need at least three points).

1. $y = -3x + 4$



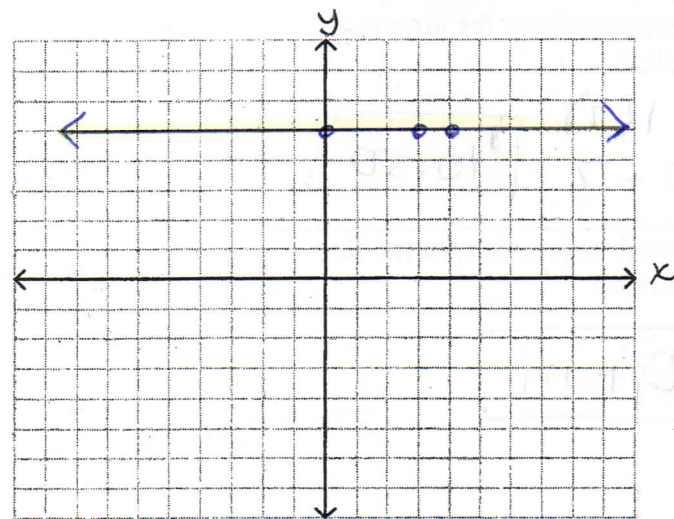
x	y
0	4
1	1
2	-2

2. $y = \frac{1}{3}x - 2$



x	y
0	-2
3	-1
6	0

3. $y = 5$



x	y
0	5
3	5
4	5